

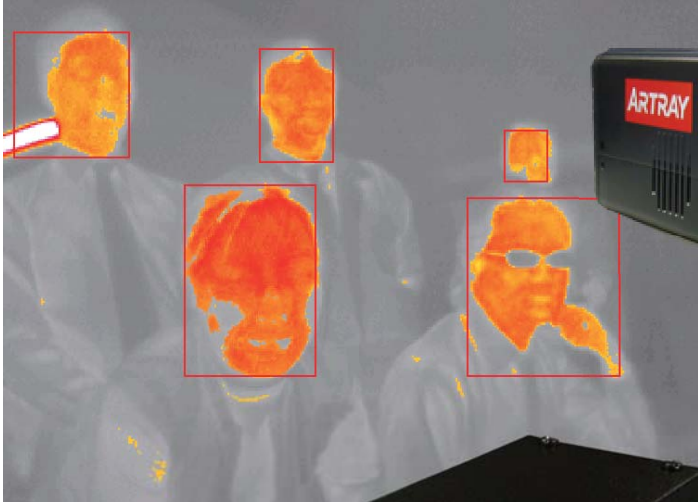
# INFRARED THERMAL IMAGING

## CAMERA

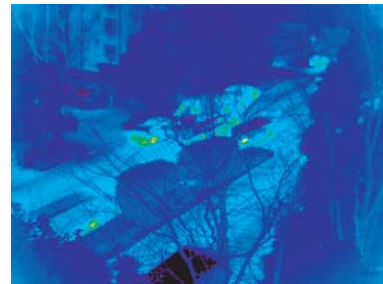
USB2.0 GigE

Made in Japan

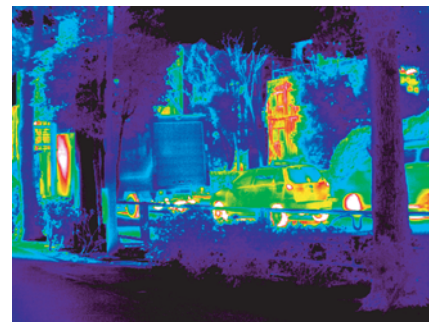
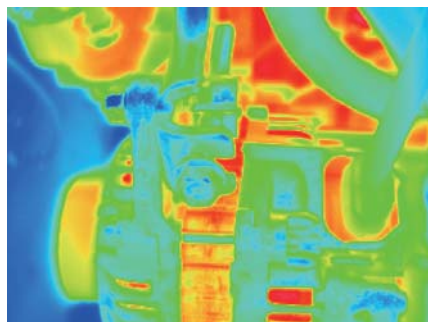
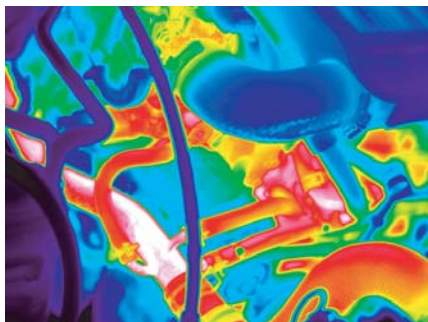
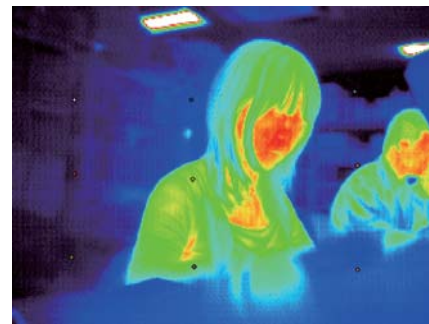
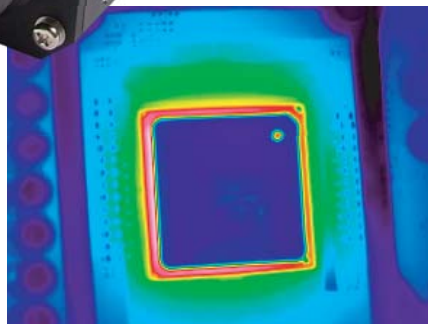
ARTCAM-320-THERMO and ARTCAM-640-THERMO Infrared thermal imaging camera is no need to use an image input board to transfer images. Images are directly transferred to a PC by USB interface. You also can get microbolometer's RAW data directly(14bit).



QVGA size  
ARTCAM-320-THERMO



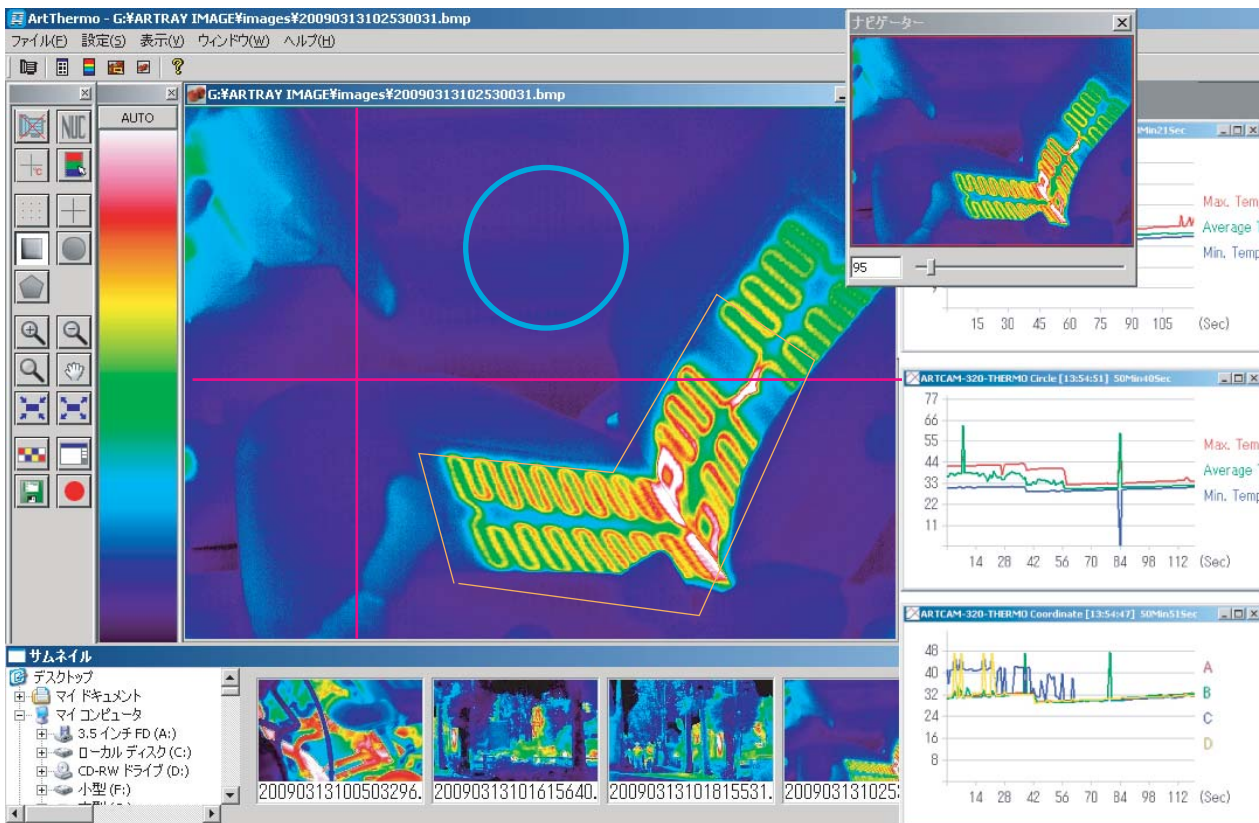
VGA size  
ARTCAM-640-THERMO



[www.artray.us](http://www.artray.us)

**ARTRAY**

## ▼ Viewer Software



## VGA Size

### ARTCAM-640-THERMO

Effective Pixels : VGA 640(H)x480(V)  
 Field of View : f=50mm 17° (H)x13° (V)  
 Dimension : 82(W)x85(H)x121(D)mm

## QVGA Size

### ARTCAM-320-THERMO

Effective Pixels : QVGA 320(H)x240(V)  
 Field of View : f=8mm 50° (H)x37° (V)  
 Dimension : 72(W)x62(H)x112(D)mm

## Specification

Detector	: Unti-Cooling Microbolometer (Built in peltier device)
Frame Rate	: 30FPS
Pixel Pitch	: 23.5μm
Output	: 14 bit digital output
Interface	: USB2.0 Bulk transfer, streaming output
Power	: DC12V/1A
Tunning Temperature	: 0~35°C Below 80% (No condensing)
Measure Range	: ±5%
Dynamic Range	: L Range: -40~150°C, H Range: 0~540°C
Attached Items	: Device driver, Viewer software +12 1A external DC provider, USB cable
Option	: Software Development Kit(SDK) Germanium Lens f=50mm, 25mm, 16mm x1.5Micro Lens
Operating Systems	: Windows XP, Windows Vista

## Usage

Quality Control  
 Surveillance  
 Building Inspection  
 Medical Service  
 Diagnosis  
 Research & Development  
 Image Prossesing  
 Fire Alert



## ARTRAY CO., LTD.

Ueno Bldg. 1-17-5 Kouenjikita Suginami-Ku Tokyo 166-0002, Japan  
 TEL : +81-3-3389-5488 FAX: +81-3-3389-5486  
 Email : sales@artray.us URL : www.artray.us

• ARTCAM is ARTTRAY's registered trademark.  
 • We might change product's specifications without announcement. Sorry for inconvenience in advance.